

Cynomolgus MSLN/Mesothelin Protein

Cat. No. MSL-CM180

Description

Source	Recombinant Cynomolgus MSLN/Mesothelin Protein is expressed from HEK293 with His tag at the C-terminus. It contains Asp296-Gly580.
Accession	XP_005590873.4
Molecular Weight	The protein has a predicted MW of 33 kDa. Due to glycosylation, the protein migrates to 35-50 kDa based on Bis-Tris PAGE result.
Endotoxin	Less than 1EU per µg by the LAL method.
Purity	> 95% as determined by Bis-Tris PAGE > 95% as determined by HPLC

Formulation and Storage

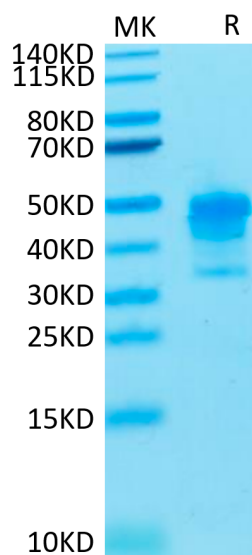
Formulation	Lyophilized from 0.22µm filtered solution in PBS (pH 7.4). Normally 8% trehalose is added as protectant before lyophilization.
Reconstitution	Centrifuge the tube before opening. Reconstituting to a concentration more than 100 µg/ml is recommended. Dissolve the lyophilized protein in distilled water.
Storage	-20 to -80°C for 12 months as supplied from date of receipt. -80°C for 3 months after reconstitution. Recommend to aliquot the protein into smaller quantities for optimal storage. Please minimize freeze-thaw cycles.

Background

Mesothelin, also known as MSLN, is a protein that in humans is encoded by the MSLN gene. Cloning studies showed that the mesothelin gene encodes a precursor protein that is processed to yield mesothelin which is attached to the cell membrane by a glycoposphatidylinositol linkage and a 31-kDa shed fragment named megakaryocyte-potentiating factor (MPF). Although it has been proposed that mesothelin may be involved in cell adhesion, its biological function is not known. A knockout mouse line that lacks mesothelin reproduces and develops normally.

Assay Data

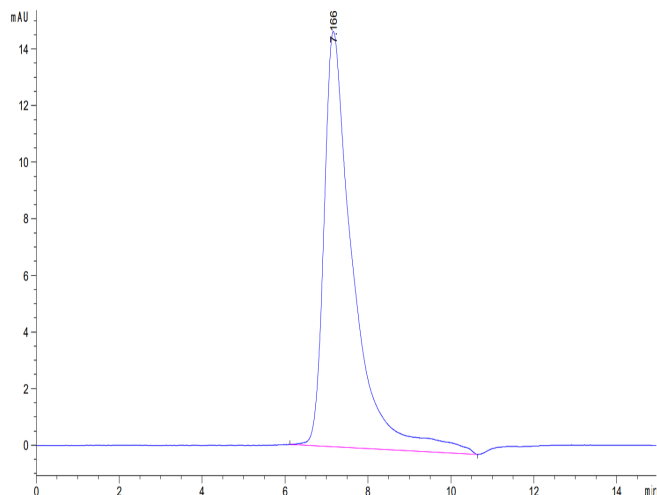
Bis-Tris PAGE



Cynomolgus MSLN on Bis-Tris PAGE under reduced condition. The purity is greater than 95%.

SEC-HPLC

Assay Data

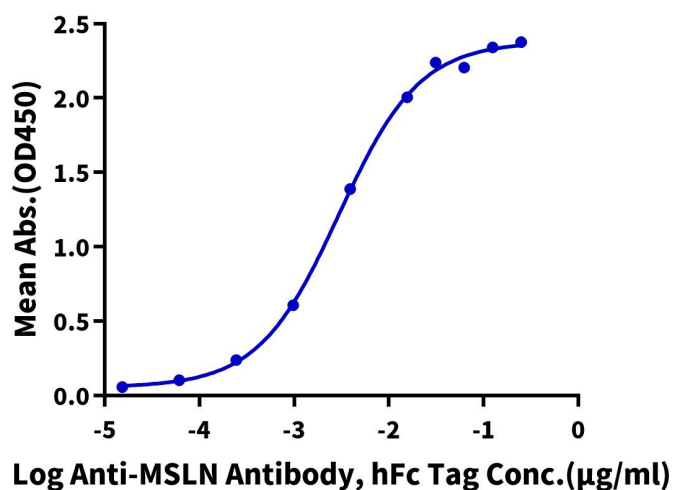


The purity of Cynomolgus MSLN is greater than 95% as determined by SEC-HPLC.

ELISA Data

Cynomolgus MSLN, His Tag ELISA

0.1 μg Cynomolgus MSLN, His Tag Per Well



Immobilized Cynomolgus MSLN, His Tag at 1 μg/ml (100 μl/well) on the plate. Dose response curve for Anti-MSLN Antibody, hFc Tag with the EC50 of 3.0 ng/ml determined by ELISA (QC Test).